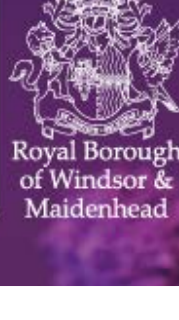


# COVID-19 Updates

www.rbwm.gov.uk

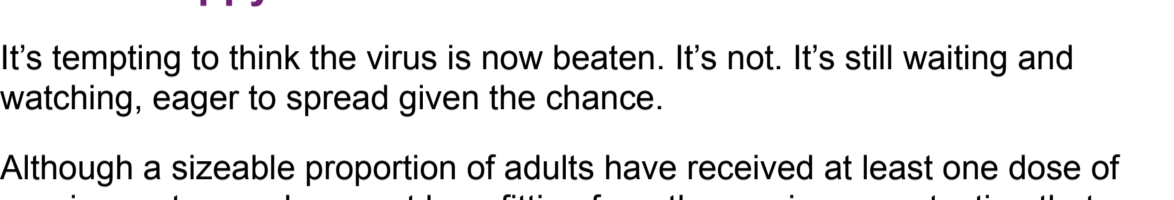


## Community testing for everyone

More of us are now out and about meeting loved ones outside, playing organised sports, and restrictions are due to ease further from 12 April. This is why we've now widened our criteria for free lateral flow tests (LFTs) to anyone who lives and/or works in the Royal Borough.

Taking a LFT twice a week is the best way to find the one in three asymptomatic cases among us and stop the virus in its tracks. Testing gives you the confidence to know you're not spreading the virus among your loved ones, friends, and work colleagues, and to safely enjoy these new freedoms.

Our testing centres at Braywick and Windsor Leisure Centres are remaining open during the four-day Easter weekend although hours will be reduced. Visit our [Community Testing booking webpage](#) to see these Easter opening hours as well as other information about the scheme including how to book.

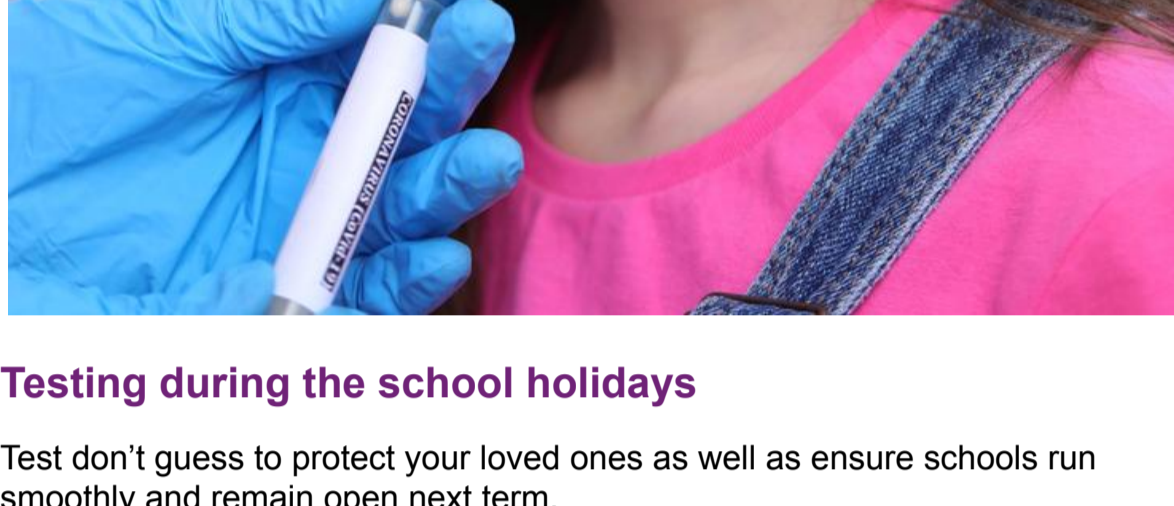


## Have a happy and safe Easter

It's tempting to think the virus is now beaten. It's not. It's still waiting and watching, eager to spread given the chance.

Although a sizeable proportion of adults have received at least one dose of vaccine, not enough are yet benefitting from the maximum protection that comes with the second jab. Even vaccinated, you can still catch the virus – albeit not as seriously – but crucially you could still pass it on to those without protection.

Remember the simple safety behaviours. Hands, face, space are still the most effective ways to slow the spread. And being outside is far safer than inside with fresh air dispersing the virus' molecules.

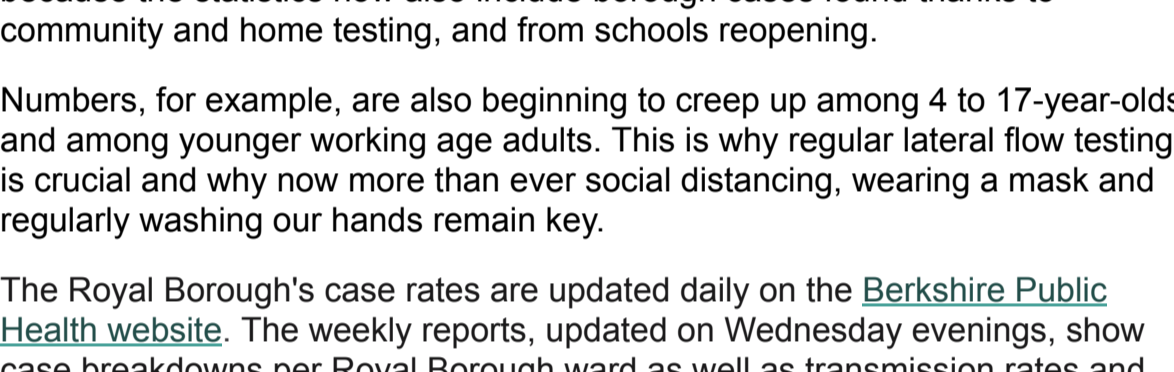


## Testing during the school holidays

Test don't guess to protect your loved ones as well as ensure schools run smoothly and remain open next term.

Keep on doing your lateral flow tests twice a week during the school holidays, as well as the night before or morning on the first day back.

If you need more home tests, you can pick them up from one of our Community Testing sites at Braywick or Windsor Leisure Centres. They'll be running reduced hours during the Easter weekend, but after that they'll return to their normal hours. Visit our [Community Collect webpage](#) for more information.

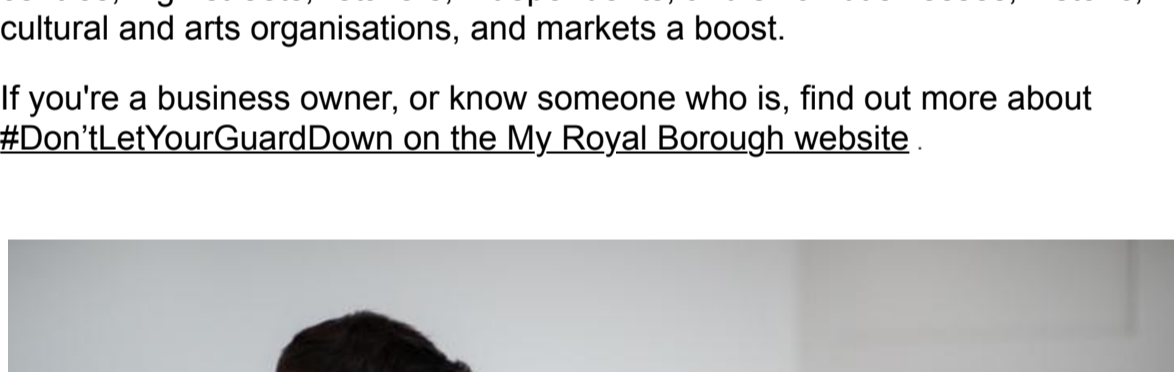


## Royal Borough cases

As of today there are 66.7 cases per 100,000. The rate continues to increase because the statistics now also include borough cases found thanks to community and home testing, and from schools reopening.

Numbers, for example, are also beginning to creep up among 4 to 17-year-olds and among younger working age adults. This is why regular lateral flow testing is crucial and why now more than ever social distancing, wearing a mask and regularly washing our hands remain key.

The Royal Borough's case rates are updated daily on the [Berkshire Public Health website](#). The weekly reports, updated on Wednesday evenings, show case breakdowns per Royal Borough ward as well as transmission rates and vaccination figures per age group.

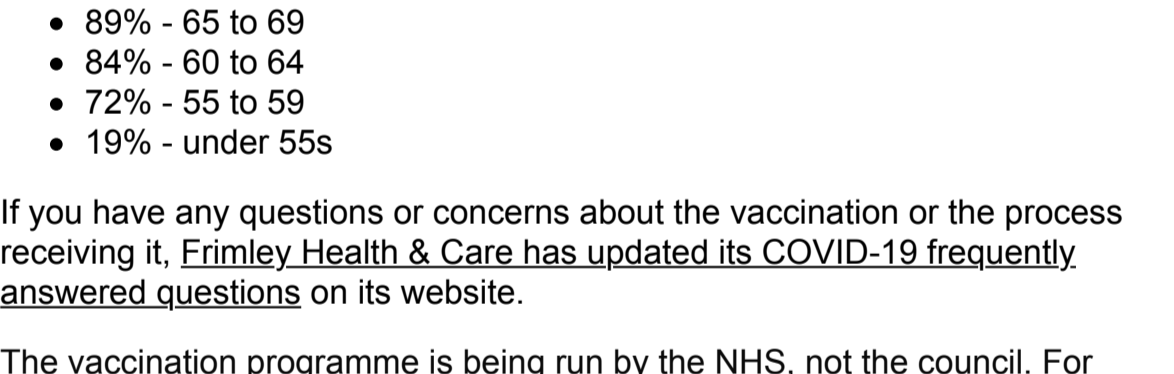


## Don't let your guard down

My Royal Borough hopes you can join its new campaign to support local businesses and communities as lockdown continues to ease.

It wants to help businesses bounce back stronger than before, building on its Shop Local, Shop Safe campaign last year. The aim is to give our town centres, high streets, retailers, independents, and small businesses, historic, cultural and arts organisations, and markets a boost.

If you're a business owner, or know someone who is, find out more about [#Don'tLetYourGuardDown](#) on the [My Royal Borough website](#).



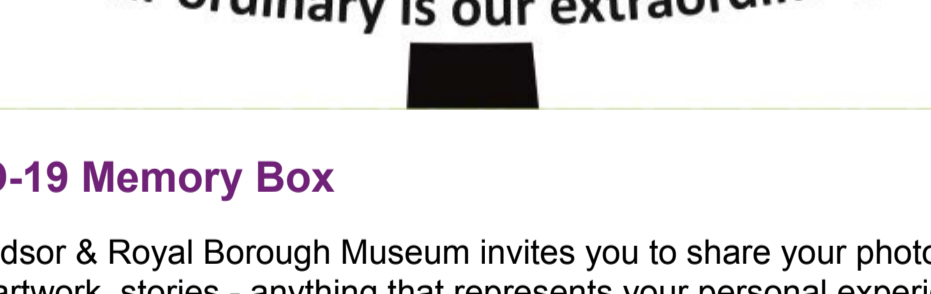
## Vaccination latest

Across the Royal Borough, Frimley NHS Health & Care has so far administered vaccines to:

- 94% - ages 80+
- 93% - 75 to 79
- 92% - 70 to 74
- 89% - 65 to 69
- 84% - 60 to 64
- 72% - 55 to 59
- 19% - under 55s

If you have any questions or concerns about the vaccination or the process receiving it, [Frimley Health & Care has updated its COVID-19 frequently answered questions](#) on its website.

The vaccination programme is being run by the NHS, not the council. For Frimley NHS Health and Care's statistics [see regional and national data on the NHS England website](#).



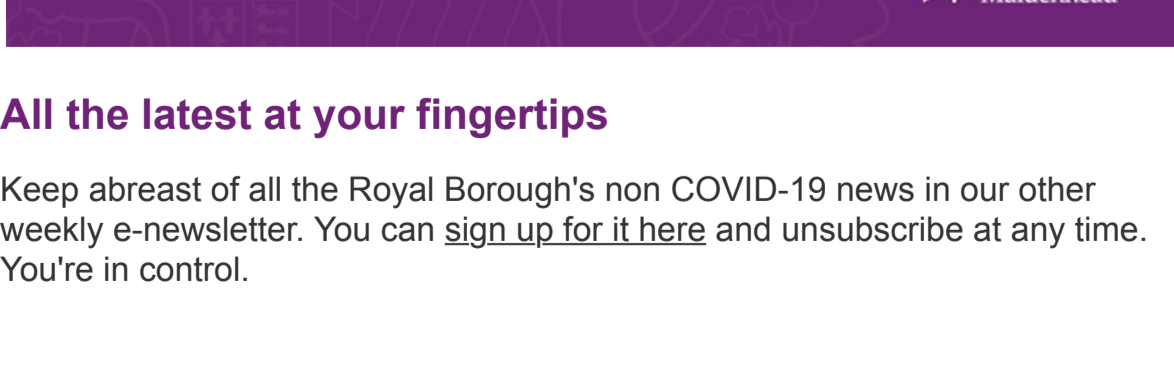
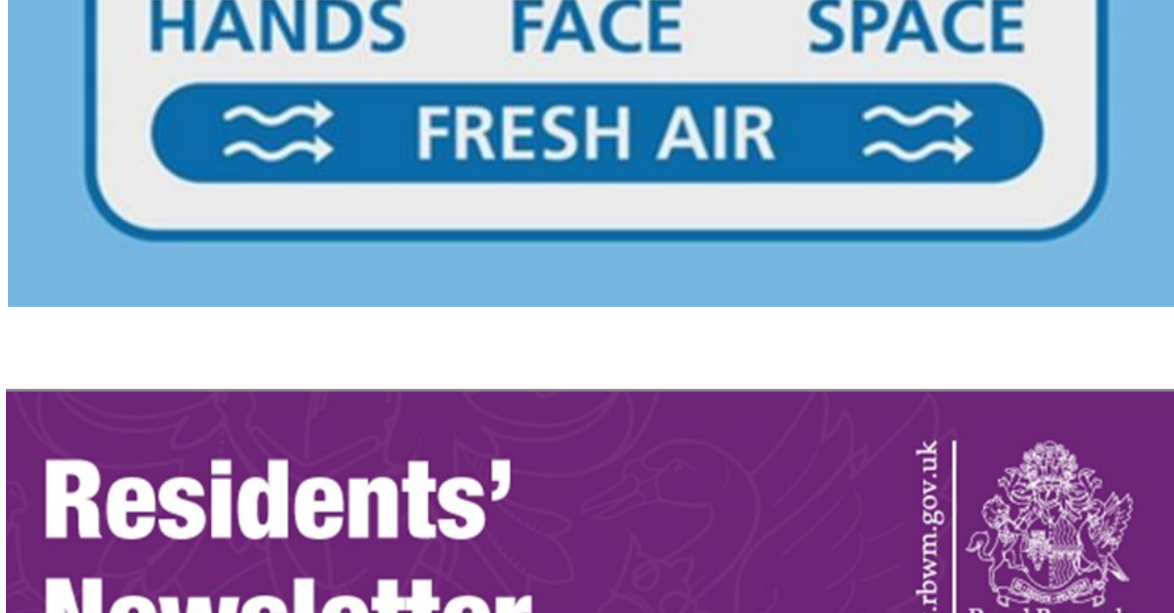
Your ordinary is our extraordinary

## COVID-19 Memory Box

The Windsor & Royal Borough Museum invites you to share your photographs, videos, artwork, stories - anything that represents your personal experiences of life during this pandemic and lockdown.

The aim is to build a collection reflecting our community experience, from the highlights of special times with our family, to the lows of our darker and sadder days. It will be used to tell our shared story and help future generations understand what we experienced.

To get involved with this unique opportunity, visit the [Royal Borough Memory Box website](#) to donate your memories via the online form.



## All the latest at your fingertips

Keep abreast of all the Royal Borough's non COVID-19 news in our other weekly e-newsletter. You can [sign up for it here](#) and unsubscribe at any time. You're in control.

## Helpful contacts

[COVID-19 support in the Royal Borough](#)

[Government roadmap out of lockdown](#)

[Government COVID-19 information](#)

[Public Health England and Department of Health and Social Care guidance](#)

[NHS England advice](#)

Keep up to date with Royal Borough COVID-19 news and information by following us on [Twitter](#) and [Facebook](#).

Read the [Privacy Notice for this e-newsletter on our website](#).