

[View as Webpage](#)

Please share with friends, family and neighbours in the borough so they can keep up to date. Sign up here if you've received a forwarded copy.

2021/22 council budget approved

The Royal Borough of Windsor & Maidenhead's budget for 2021/22 was approved at Full Council earlier this week.

The budget aims to provide a stable footing for future years after additional financial pressures on this year's budget due to the coronavirus pandemic.

This budget will see a 4.99% increase in Council Tax (including 3% for the adult social care precept) which is an overall increase of £1.03 per week for band D properties. Council Tax bills will be delivered to homes in the borough in March.

This year's budget also sets out £16m of investment into Maidenhead regeneration, £1.6m into maintaining our roads and £2.4m into the Castle Hill project in Windsor.

The budget will also continue to support our most vulnerable residents, with £50m committed to adults, health and commissioning (a £2m increase) and £24m to support our children's services (a £1.2m increase).

To learn more, read our [press release](#).



Domestic abuse charity continues to receive council support

Domestic abuse charity, The Dash Charity, has received a funding boost of almost £100,000 from the Royal Borough of Windsor & Maidenhead.

We have extended our partnership with the charity, which provides specialist support to those who have experienced or witnessed domestic abuse in the borough, until March 2022.

The charity will continue to support an independent domestic violence advisor service, an outreach domestic abuse service and a children's restorative programme.

You can read more on our [press release](#).



Maidenhead roundabout works

Work on Oldfield Road roundabout in Maidenhead will begin on Monday 8 March. The work will replace the existing roundabout with a signal-controlled junction to improve the flow of traffic and make it easier for pedestrians and cyclists to cross the junctions.

As part of these works, Oldfield Road will be closed overnight from Monday 8 to Wednesday 10 March from 8pm to 6am.

The works are part of a £6m road improvement scheme in the Royal Borough aimed at improving six key roundabouts in Maidenhead. To learn more about the scheme please read our [press release](#).



Royal Borough adopts environment and climate strategy

The Royal Borough of Windsor & Maidenhead has adopted an environment and climate strategy.

The strategy was created following our declaration of an environment and climate emergency and builds on our vision to create a borough of opportunity and innovation. It sets out our framework to achieve our target of net-zero carbon emissions in the borough.

It also includes an initial action plan which runs until 2025. The plan includes targets such as increasing local biodiversity and recycling rates, reducing consumption levels and reducing the need for carbon intensive travel within the borough.

You can read the full strategy on [our website](#).

To learn more, read our [press release](#).

Public space improvement work on Castle Hill, Windsor

On Monday 1 March, a scheme to improve the public space outside Windsor Castle will begin with work on Castle Hill.

The work will be completed over three weeks and there will be limited disruption to traffic.

The work is part of a wider public spaces improvement scheme in Windsor which will see the area around the castle be made more pedestrian-friendly and a protective gate installed behind the Queen Victoria statue.

To find out more about the public space improvement scheme, read our [press release](#).

Respond to September 2021 school place offer

If your child is starting secondary, middle or primary school in September 2021, you must respond to their place offer by **Monday 15 March 2021**. For more information and how to respond, visit [our website](#).

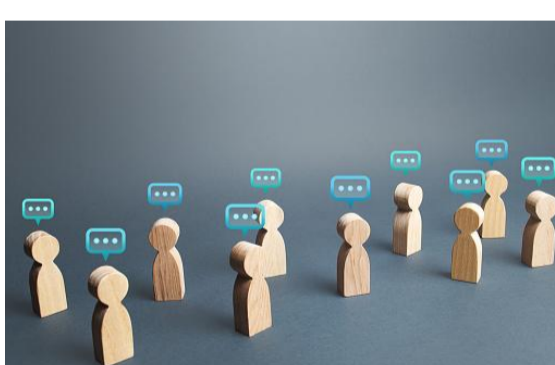
Have your say

We regularly hold consultations to get your views on proposals within the Royal Borough.

Responding to our consultations and giving your feedback is the best way to ensure your views are heard.

Our current consultations are:

- [Highways and transport survey](#) – deadline Sunday 28 February 2021 **closing soon**
- [Proposed library service transformation strategy](#) – deadline Friday 30 April 2021



Upcoming council meetings

Council meetings can be viewed online on our [YouTube channel](#).

Upcoming meetings include:

- [Extraordinary council meeting - Tuesday 2 March](#)

See the full diary of meetings on our [meetings and agendas page](#).

Upcoming Windsor rail line closures

The Windsor rail line between Staines and Windsor & Eton Riverside will be closed from 12.45am on Saturday 6 March to 5am on Saturday 13 March, due to engineering works carried out by Network Rail. Rail replacement bus services will be in operation.

During these works, Datchet and Mays level crossings will be closed for up to 15 minutes at a time on Sunday 7 March between 7am and 9am to allow for specific tasks to be completed. Otherwise, they will remain open as normal.

To learn more, visit the [Network Rail website](#).



M4 closures

The M4 will be closed westbound between junctions 3 (Hayes) and 4b (M25 interchange) and eastbound between junctions 4 (West Drayton) and 4b (M25 interchange) from 8pm on Friday 26 February to 6am on Monday 1 March 2021.

Visit the [Highways England website](#) for more details on the M4 smart motorway works.



Keep in touch

Keep up to date with news and information from the council by [signing up to Nextdoor](#) or following us on [Twitter](#) and [Facebook](#).

Other accounts you may be interested in:

- Royal Borough official [tourism web page](#).
- Libraries on [Facebook](#) and [Twitter](#).
- Windsor & Royal Borough [Museum web page](#).
- MyRoyalBorough on [Twitter](#), [Facebook](#) and [Instagram](#).
- Make Maidenhead on [Twitter](#) and [Facebook](#).